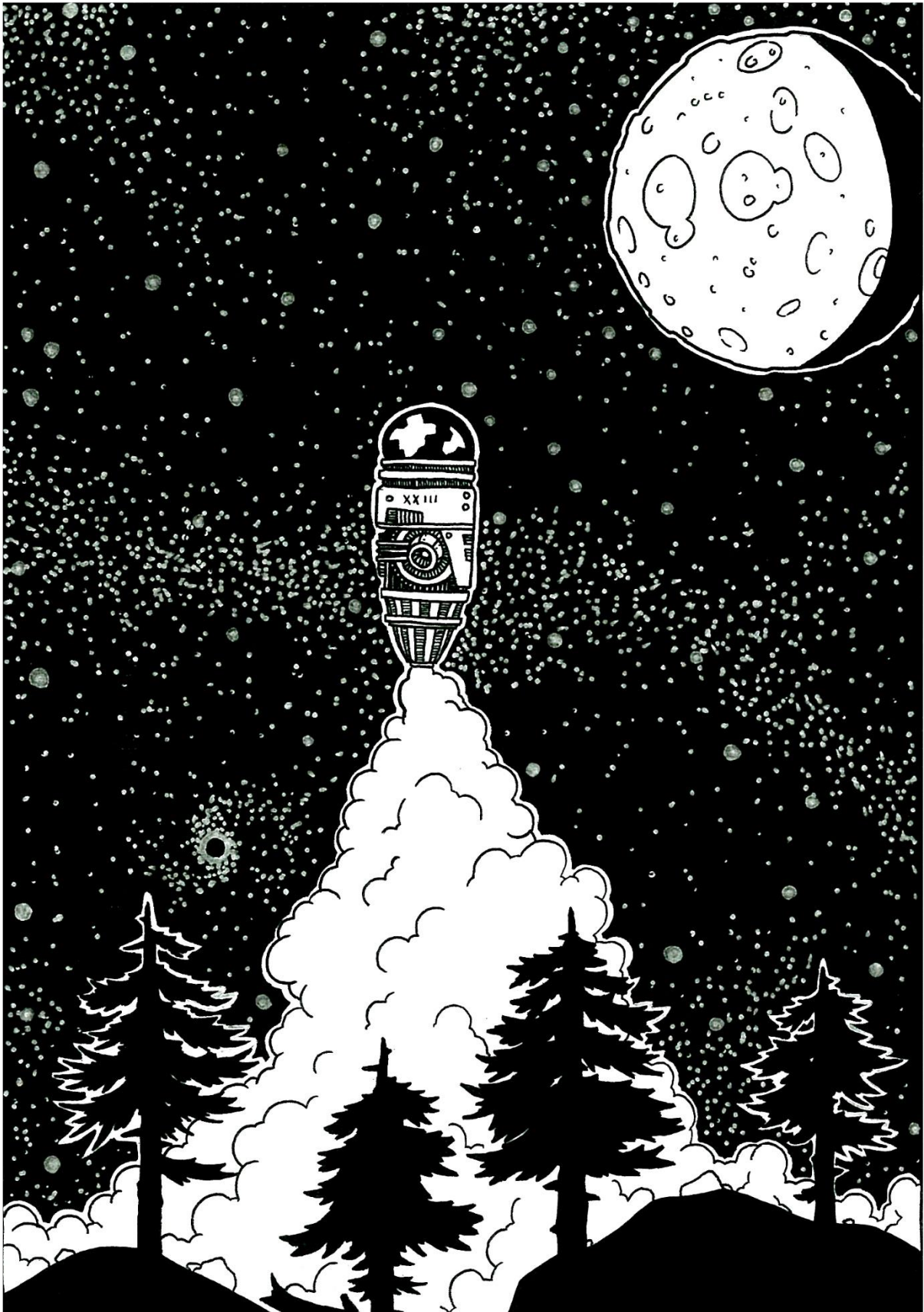


## SPC NASA Trip 2019: Carbon Neutral fundraiser with Cue Haven



We are aiming to reduce the carbon footprint of our flights to the U.S.A by offsetting it through tree planting with Cue Haven ([www.cuehaven.com](http://www.cuehaven.com))

Sponsor a student with the purchase of a native New Zealand tree for \$10

Relieve some carbon-based guilt with ease as credit card donations are also accepted:

- **School Bank Account:** 01-1839-0303079-000
- **Reference:** Trees NASA

For more details contact: Guru Kumar, [gkumar@st-peters.school.nz](mailto:gkumar@st-peters.school.nz); 021 944 647